

start here.

quick start guide



brewista

ARTISAN Gooseneck Kettle

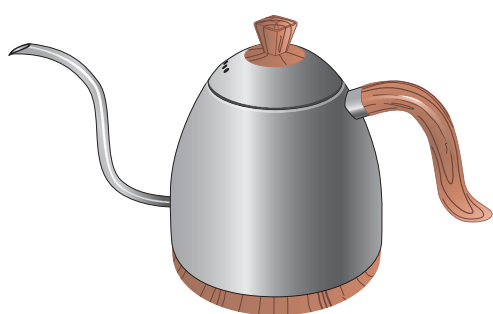
variable temperature kettle
1.0L BA10VKVDE Series
0.6L BA06VKVDE Series

features



- Displays temperature in Fahrenheit or Celsius
- Includes preset temperatures for popular hot beverages
- Retains last temperature settings when powered off
- Allows user to set and hold water temperature for up to one hour
- Durable food grade stainless steel
- Count-up timer feature
- Detachable power cord
- For use in households and residential environments only.

what's in the box?



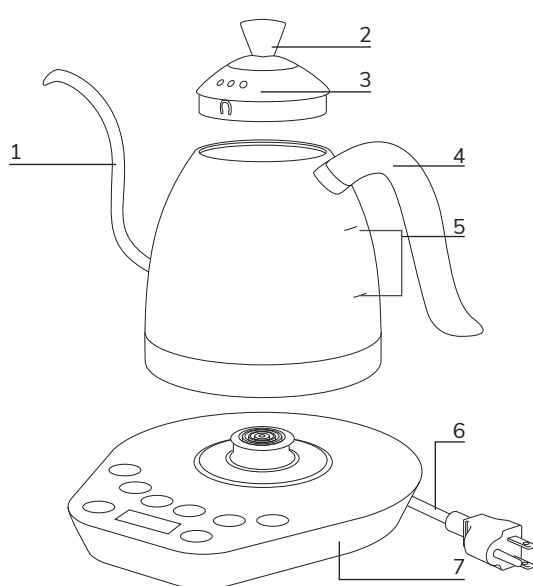
0.6L / 1.0 Liter Gooseneck Spout Digital Kettle

Removable Power Cord



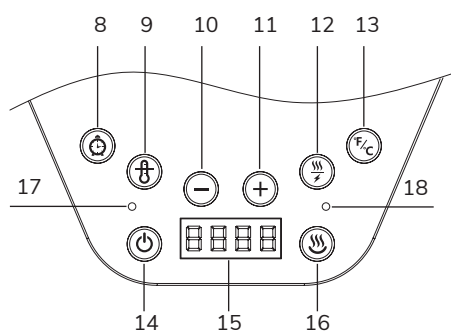
Base with capacitive touch icons

the components



- 1) Spout
- 2) Lid
- 3) Vent holes
- 4) Handle
- 5) "Max" and "Min" water level indicators (inside kettle)
- 6) Power cord with plug
- 7) Base

the interface



- 8) Count-up Timer icon
- 9) Temperature Setting icon
- 10) [-] icon
- 11) [+] icon
- 12) Fast Boil icon
- 13) °F / °C icon
- 14) Power icon
- 15) LCD display
- 16) Keep Warm icon
- 17) Heating indicator light
- 18) Keep Warm indicator light

setting up your kettle



- Set the base on a flat, steady surface and attach the female end of the removable power cord to the base.
- Plug cord into a grounded wall outlet. Refer to the SAFEGUARDS sections at the beginning of your owner's manual for more details before plugging in your kettle.

WARNING: Misuse of this appliance may cause burns or other injury. Read and follow all instructions for proper use.

WARNING: Heating element may emit residual heat for several minutes after use.

WARNING: This appliance is not intended for use by children. Do not allow children to play with this device.

first time use



- Fill the kettle to the "max" fill line (marked on inside of kettle) with cold water. Avoid getting the connector on the bottom of the kettle wet.

IMPORTANT! Do not fill above "max" fill line (0.6L/1.0L).

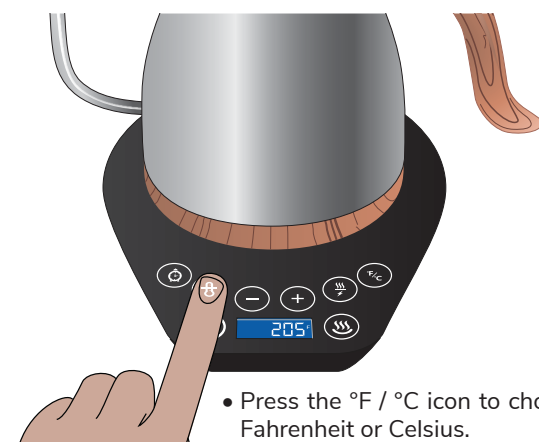
- Replace the lid with vent holes facing away from the handle and place kettle back on its base.
- Press the Power icon to turn the kettle on and then press the Fast Boil icon to start boiling automatically.
- Bring water to a boil, then empty the kettle.

WARNING: Setting the temperature above the boiling point is not recommended and may damage the kettle. Refer to the "High Altitude Users" section in the owner's manual to determine the boiling temperature for your altitude.

- Allow the appliance to cool down for 1 minute.
- Repeat twice before initial use.

setting the temperature

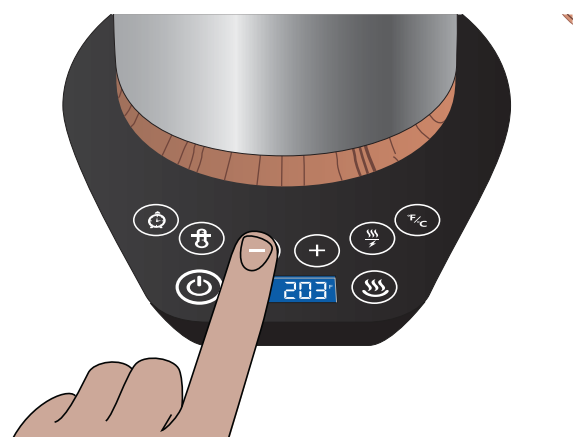
(Refer to owner's manual for detailed temperature setting instructions.)



- Press the °F / °C icon to choose either Fahrenheit or Celsius.
- Press the Temperature Setting icon to choose a preset temperature.
- Press the [+] icon to increase the temperature by one degree.
- Press the [-] icon to decrease the temperature by one degree.
- The temperature displayed on the screen will be stored after three (3) seconds.
- Once the temperature is set, it will be stored in memory and will be recalled the next time the kettle is turned on.
- During the heating cycle, the LCD will display the current water temperature.

setting the temperature

(continued)



- To stop the heating process, press the Power icon or remove the kettle from the base.
- To resume heating, return kettle to its base and press the Power icon.
- When the set temperature is reached, two audible beeps will be heard.

WARNING: Never set the temperature above the boiling point. Refer to the "High Altitude Users" section in the owner's manual to determine the boiling temperature for your altitude.

timer feature



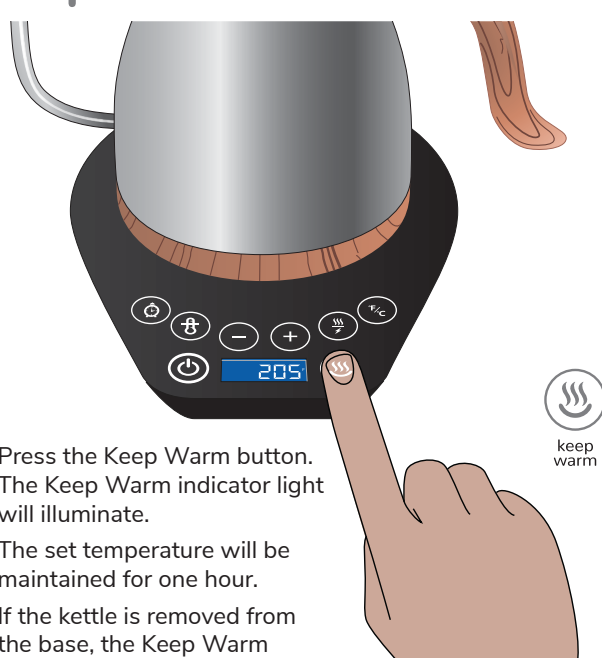
- Remove the kettle from the base.
- The LCD will display "00:00".
- Press the Timer icon to start the count-up timer.
- The maximum count-up time is 59'59".
- Press the Timer icon while timer is counting to stop timer.
- Press the Timer icon a second time to return timer to zero.
- When the kettle is removed from the base and then returned, the LCD will display current water temperature.

fast boil



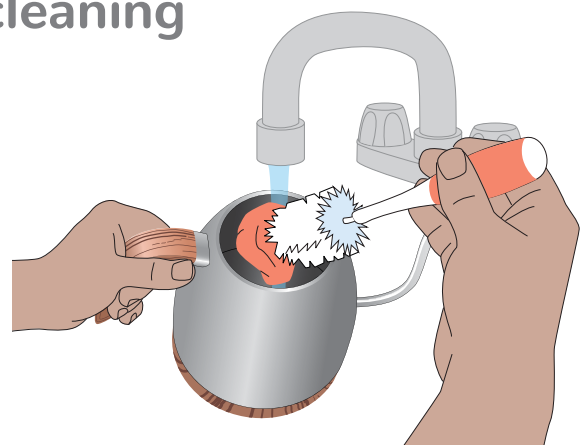
- Press the Fast Boil icon. The Fast Boil function brings the water to boiling temperature as quickly as possible.
- Once the kettle's water has reached boiling temperature (varies based on your altitude), you will hear 3 beeps and the Fast Boil function will stop.
- The actual temperature inside the kettle will be displayed for 10 minutes before the kettle enters Sleep Mode.
- To stop the Fast Boil function, press the Fast Boil icon or Power icon at any time during the cycle.

keep warm



- Press the Keep Warm button. The Keep Warm indicator light will illuminate.
- The set temperature will be maintained for one hour.
- If the kettle is removed from the base, the Keep Warm feature will deactivate.
- To resume the Keep Warm feature, return kettle to base and press the Keep Warm button.
- If the Keep Warm feature is not active, the kettle will reach the set temperature and shut off.

cleaning



- Remove the kettle from the base.
- Clean the outside of the base and the kettle with a damp, soft cloth or sponge.
- Clean the inside of the kettle with dish detergent and rinse thoroughly with water. A bottle brush may be used to clean the interior of the kettle.
- Do not use abrasive cleaners.
- After cleaning, dry the kettle and its base thoroughly. Make sure the connector on the bottom of the kettle and the base are completely dry before using the kettle again.

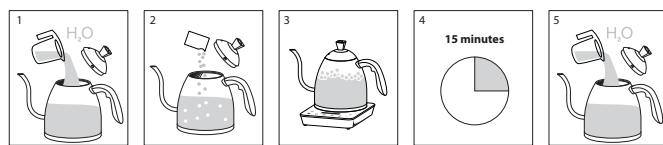
WARNING: Never immerse the kettle or the base in water or other liquids.

descaling

- When mineral scale builds up in the kettle, it can affect temperature consistency and slow down heating time.
- To ensure optimum performance, we recommend descaling the kettle when mineral build-up is visible inside the kettle.

Note: Vinegar may not effectively descale the kettle and can be difficult to thoroughly rinse. Vinegar may also leave behind an odor that could affect future use.

Brewista recommends using Brewista® Descaler.



How to use Brewista® Descaler:

- 1) Mix 1 packet Brewista® Descaler with 40 oz. (1.2L) of lukewarm water.
- 2) Pour the solution into the kettle up to the "max" fill line.
- 3) Bring the solution to a boil.
- 4) Let the vessel cool for 15 minutes, then discard the solution.
- 5) Rinse thoroughly with fresh water.

suggested temperatures

Beverage	Temperature	
	°C	°F
Coffee	93 °C	200 °F
Green Tea	80 °C	175 °F
White Tea	85 °C	185 °F
Oolong Tea	88 °C	190 °F
Black Tea / Herbal Teas	98 °C	208 °F
Cocoa	88 °C	190 °F
Hot Cereal	91 °C	195 °F
Tea Bags	98 °C	208 °F

making pour over coffee

Pour over brewing is the simplest coffee brewing approach. It allows for the most control of saturation of the coffee grounds, and also the most participation by the user. It requires more time than hitting the ON switch of a drip coffee maker but for many, pour over coffee's higher involvement is part of the pleasure.

- 1) Measure about 6 ounces of water for each cup you intend to brew. Place measured water in kettle and turn on kettle to bring water to desired temperature.
- 2) Grind two tablespoons of beans per cup of coffee.
- 3) Rinse the filter, dripper, and glass server (or whatever you are brewing into) in hot water to preheat them.
- 4) Assemble the filter, dripper, and vessel and scoop the ground coffee into the filter.
- 5) When the water reaches the programmed temperature, remove the kettle from the base. The desired coffee brewing temperature is 205 °F, slightly lower than boiling temperature.
- 6) Now slowly pour the water into the filter. Stir the coffee just a bit to be sure it all gets saturated with water. A slow, steady pour allows for the best extraction from the grounds.