

MOD:XEPA-0523-EXRN



ENGLISH

TECHNICAL DATA

01 POWER	9.5 kW
03 FREQUENCY	50 Hz
04 POWER SUPPLY CABLE TYPE	H07RN-F
05 EXTERNAL Ø OF POWER SUPPLY CABLE	13 mm
06 VOLTAGE / POWER CABLE SECTION / CURRENT	380-415V V~3PH+N+PE 5G x 2,5 mm ² Circuit Breaker 16 A I1=13 A - I2=15.5 A - I3=15 A - In=4.5 A
	220-240 V~3PH+PE 4G x 2,5 mm ² Circuit Breaker 25 A I1=17 A - I2=21 A - I3=14.5 A - In=
10 WATER PRESSURE	150-200 kPa
13 WATER MAX CONSUMPTION	18 l/h @ 200 kPa
02 NOMINAL HEAT INPUT	5.35 kW
21 MICROWAVE POWER OUTPUT	2.16 kW
22 MICROWAVE FREQUENCY	2465 MHz
18 CAVITY DIMENSIONS (W - D - H)	399x394x418 mm
20 IP PROTECTION CLASS	3

ITALIANO

01 POTENZA	9.5 kW
03 FREQUENZA	50 Hz
04 TIPO DI CAVO ALIMENTAZIONE	H07RN-F
05 Ø ESTERNO CAVO DI ALIMENTAZIONE	13 mm
06 TENSIONE / SEZIONE CAVI ALIMENTAZIONE / CORRENTE	380-415V V~3PH+N+PE 5G x 2,5 mm ² Circuit Breaker 16 A I1=13 A - I2=15.5 A - I3=15 A - In=4.5 A
10 PRESSIONE ACQUA	150-200 kPa
13 CONSUMO MAX ACQUA	18 l/h @ 200 kPa
02 POTENZA TERMICA NOMINALE	5.35 kW
21 POTENZA IN USCITA MICROONDE	2.16 kW
22 FREQUENZA MICROONDE	2465 MHz
18 DIMENSIONI CAMERA COTTURA (L - P - H)	399x394x418 mm
20 GRADO PROTEZIONE IP	3

FRANCAIS

01 PUISSANCE ELECTRIQUE	9.5 kW
03 FREQUENCE	50 Hz
04 TYPE DE CABLE D'ALIMENTATION	H07RN-F
05 Ø EXTERNE DU CABLE D'ALIMENTATION	13 mm
06 TENSION / SECTION CABLE D'ALIM.	380-415V V~3PH+N+PE 5G x 2,5 mm ² Circuit Breaker 16 A I1=13 A - I2=15.5 A - I3=15 A - In=4.5 A
10 PRESSION DE L'EAU	150-200 kPa
13 CONSOMMATION MAX DE L'EAU	18 l/h @ 200 kPa
02 DEBIT THERMIQUE NOMINAL	5.35 kW
21 PUISSANCE DE SORTIE MICRO-ONDES	2.16 kW
22 FRÉQUENCE MICRO-ONDES	2465 MHz
18 DIMENSIONS CHAMBRE DE CUISSON (L - P - A)	399x394x418 mm
20 INDICE DE PROTECTION IP	3

ESPAÑOL

01 POTENCIA	9.5 kW
03 FRECUENCIA	50 Hz
04 TIPO DE CABLE DE ALIMENTACION	H07RN-F
05 Ø CABLE EXTERNO DE ALIMENTACION	13 mm
06 TENSION / SECCION CABLES DE ALIMENTACION	380-415V V~3PH+N+PE 5G x 2,5 mm ² Circuit Breaker 16 A I1=13 A - I2=15.5 A - I3=15 A - In=4.5 A
10 PRESION AGUA	150-200 kPa
13 CONSUMO MAX DE AGUA	18 l/h @ 200 kPa
02 POTENCIA TERMICA NOMINAL	5.35 kW
21 POTENCIA DE SALIDA MICROONDAS	2.16 kW
22 FRECUENCIA MICROONDAS	2465 MHz
18 DIMENSIONES CÁMARA DE COCCIÓN (An - Pr - Al)	399x394x418 mm
20 GRADO DE PROTECCION IP	3

DEUTSCH

01 ELEKTRISCHE LEISTUNG	9.5 kW
03 FREQUENZ	50 Hz
04 ZULEITUNGSKABELTYP	H07RN-F
05 AUSSENDURCHMESSER DES VERSORGUNGSKABELS	13 mm
06 KABELQUERSCHNITT UND VERSORGUNGSSPANNUNG	380-415V V~3PH+N+PE 5G x 2,5 mm ² Circuit Breaker 16 A I1=13 A - I2=15.5 A - I3=15 A - In=4.5 A
10 WASSERDRUCK	150-200 kPa
13 MAXIMUM WASSERVERBRAUCH	18 l/h @ 200 kPa
02 NOMINALE WARMELEISTUNG	5.35 kW
21 LEISTUNGSABGABE MIKROWELLE	2.16 kW
22 MIKROWELLENFREQUENZ	2465 MHz
18 GRÖÖBE DES KOCHKAMMERS (B - T - H)	399x394x418 mm
20 SCHTZART IP	3

MOD:XEPA-0523-EXRN



ENGLISH - DRAWINGS

2	TERMINAL BOARD POWER SUPPLY
3	UNIPOTENTIAL TERMINAL
6	TECHNICAL DATA PLATE
7	SAFETY THERMOSTAT
8	3/4" THREAD WATER INLET
10	Rotor.KLEAN CONNECTION
11	CAVITY DRAIN PIPE
12	HOT FUMES EXHAUST CHIMNEY
13	ACCESSORIES CONNECTION
27	COOLING AIR OUTLET

ITALIANO - DISEGNI

2	MORSETTIERA ALIMENTAZIONE
3	MORSETTO EQUIPOTENZIALE
6	TARGHETTA DATI TECNICI
7	TERMOSTATO DI SICUREZZA
8	INGRESSO ACQUA 3/4"
10	INGRESSO Rotor.KLEAN
11	SCARICO CAMERA DI COTTURA
12	USCITA FUMI CALDI
13	COLLEGAMENTO ACCESSORI
27	USCITA ARIA DI RAFFREDDAMENTO

FRANCAIS - ENCOMBREMEN

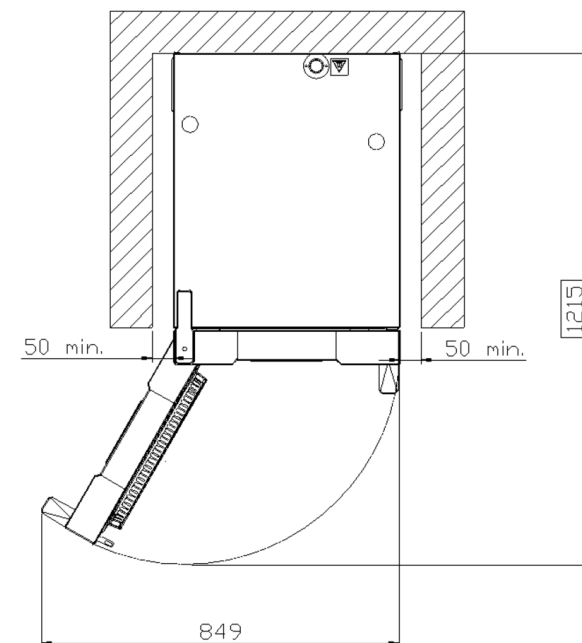
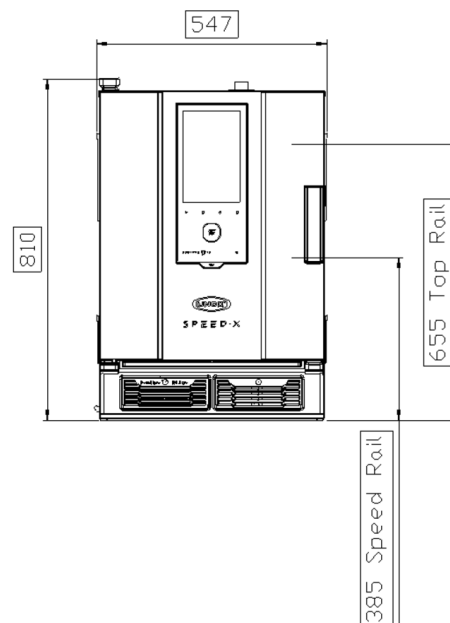
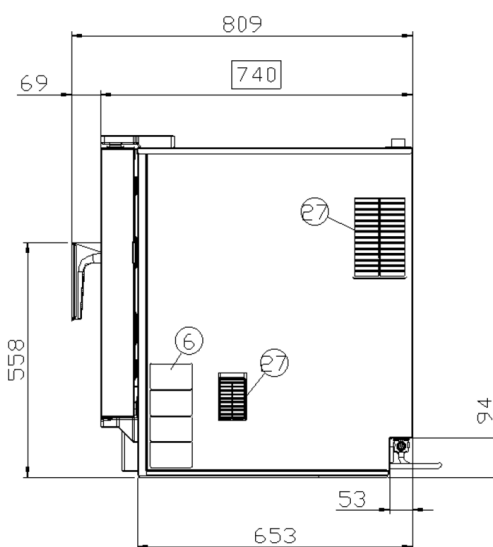
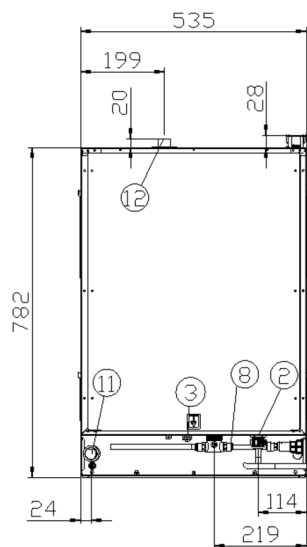
2	BOITE A BORNES D'ALIMENTATION
3	SUPPORT BORNE EQUIPOTENTIELLE
6	PLAQUETTE SIGNALÉTIQUE
7	THERMOSTAT DE SÉCURITÉ
8	ARRIVÉ D'EAU FIÉLT 3/4"
10	ENTRÉE Rotor.KLEAN
11	SORTIE DE L'EAU RACCORD
12	SORTIE DES FUMÉES CHAUDES
13	JONCTION DES ACCESSOIRES
27	SORTIE D'EAU DE REFROIDISSEMENT

ESPAÑOL - DISEÑOS

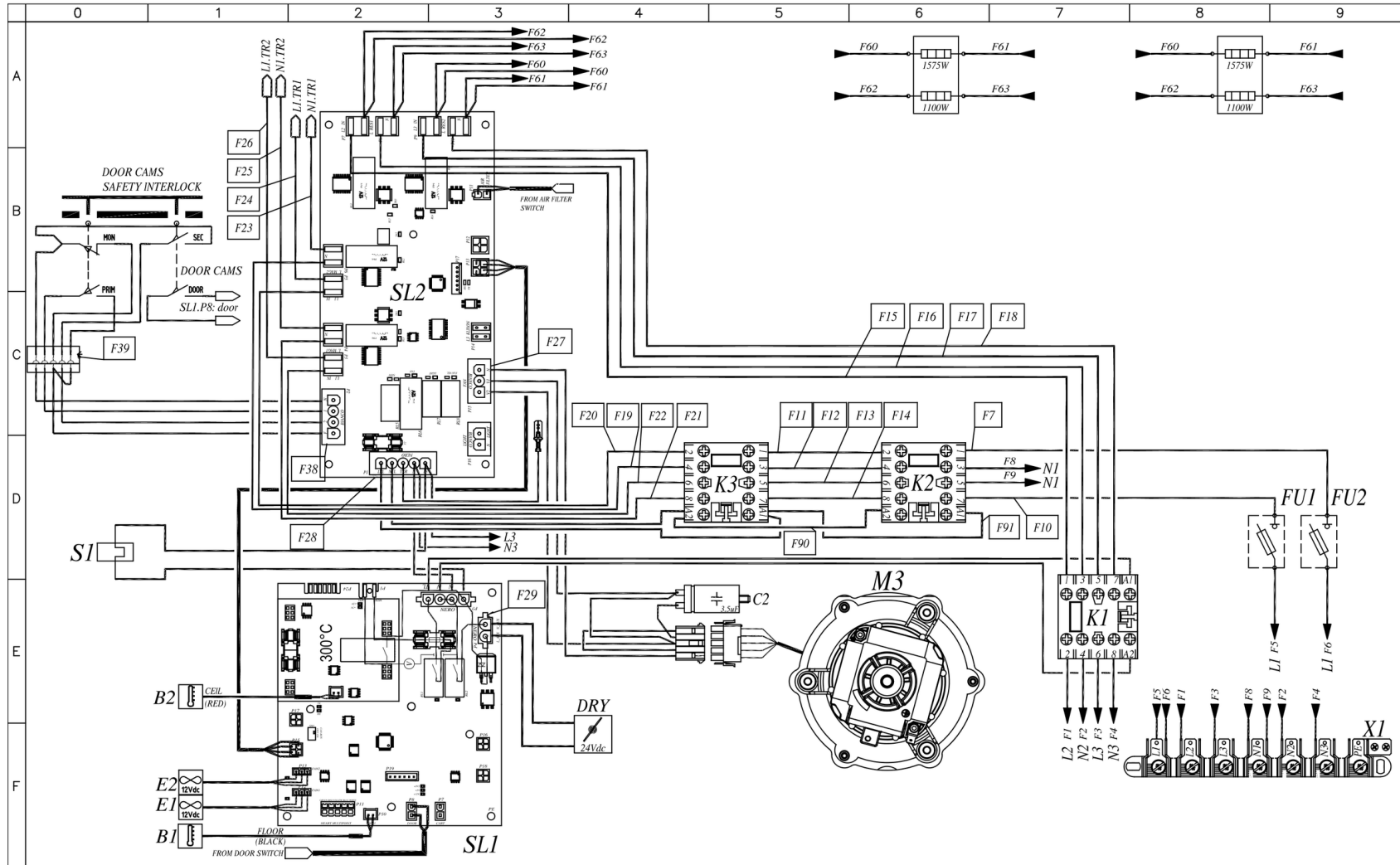
2	CAJA DE CONEXION
3	SEDE BORNE EQUIPOTENCIAL
6	TARJETA DE CARACTERISTICAS TECNICAS
7	TERMOSTATO DE SEGURIDAD
8	ENTRADA DE AGUA 3/4"
10	INGRESO Rotor.KLEAN
11	DESCARGA CAMARA DE COCCION
12	SALIDA HUMOS CALIENTES
13	CONEXION ACCESORIOS
27	SALIDA DEL AIRE DE ENFRIAMIENTO

DEUTSCH - ZEICHNUNGEN

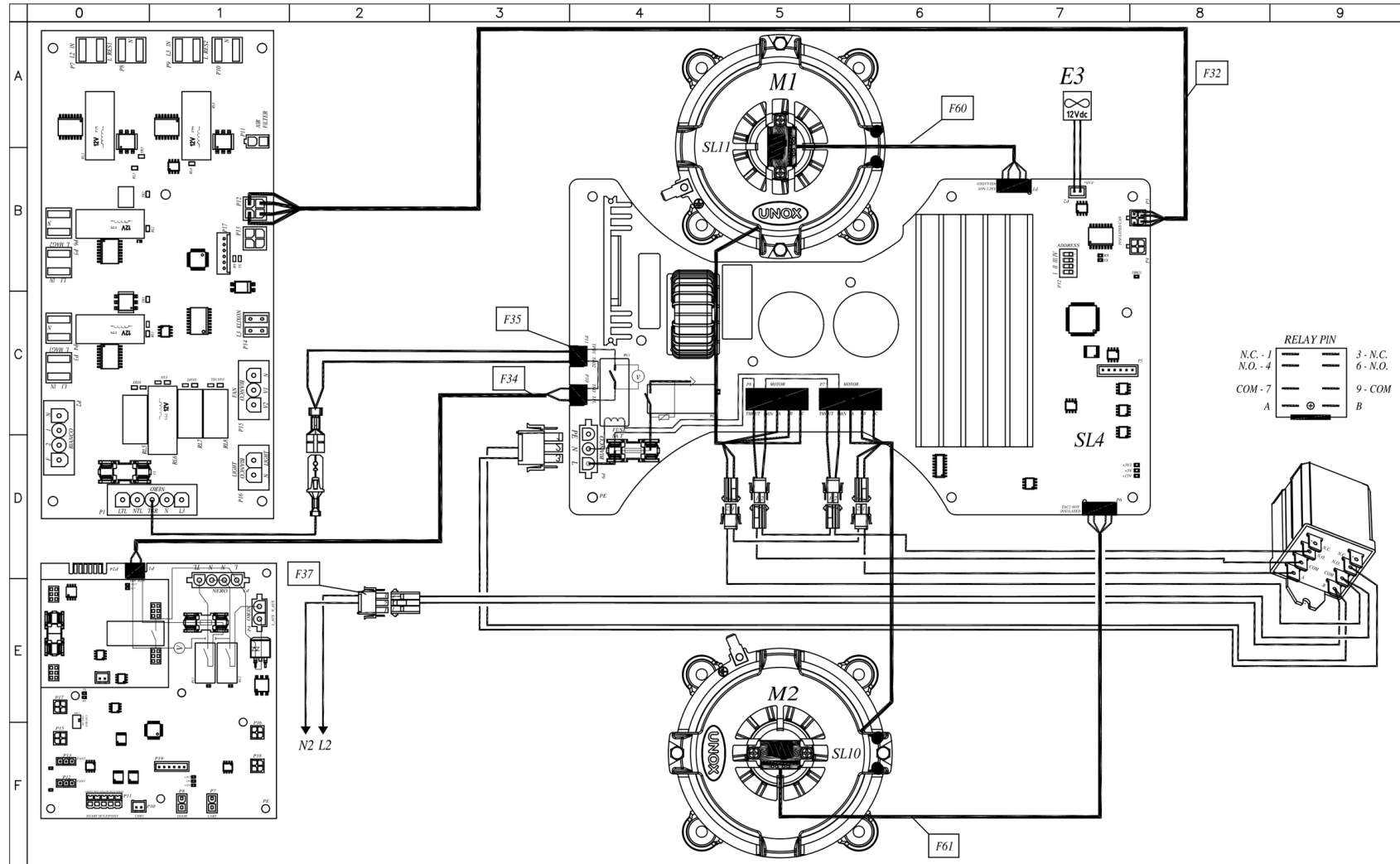
2	ZULEITUNGSKLEMMLEISTE
3	GLEICHPOTENTIELLE KLAMMER
6	TYPENSCHILD
7	SICHERHEITSTHERMOSTAT
8	WASSEREINZUG 3/4" GEWINDE
10	Rotor.KLEAN EINGANG
11	WASSERAUSLASS GEWINDE
12	ABZUGSHAUBE
13	ZUBEHÖRTEILENVERBINDUNG
27	KÜHLLUFTAUSTRITT



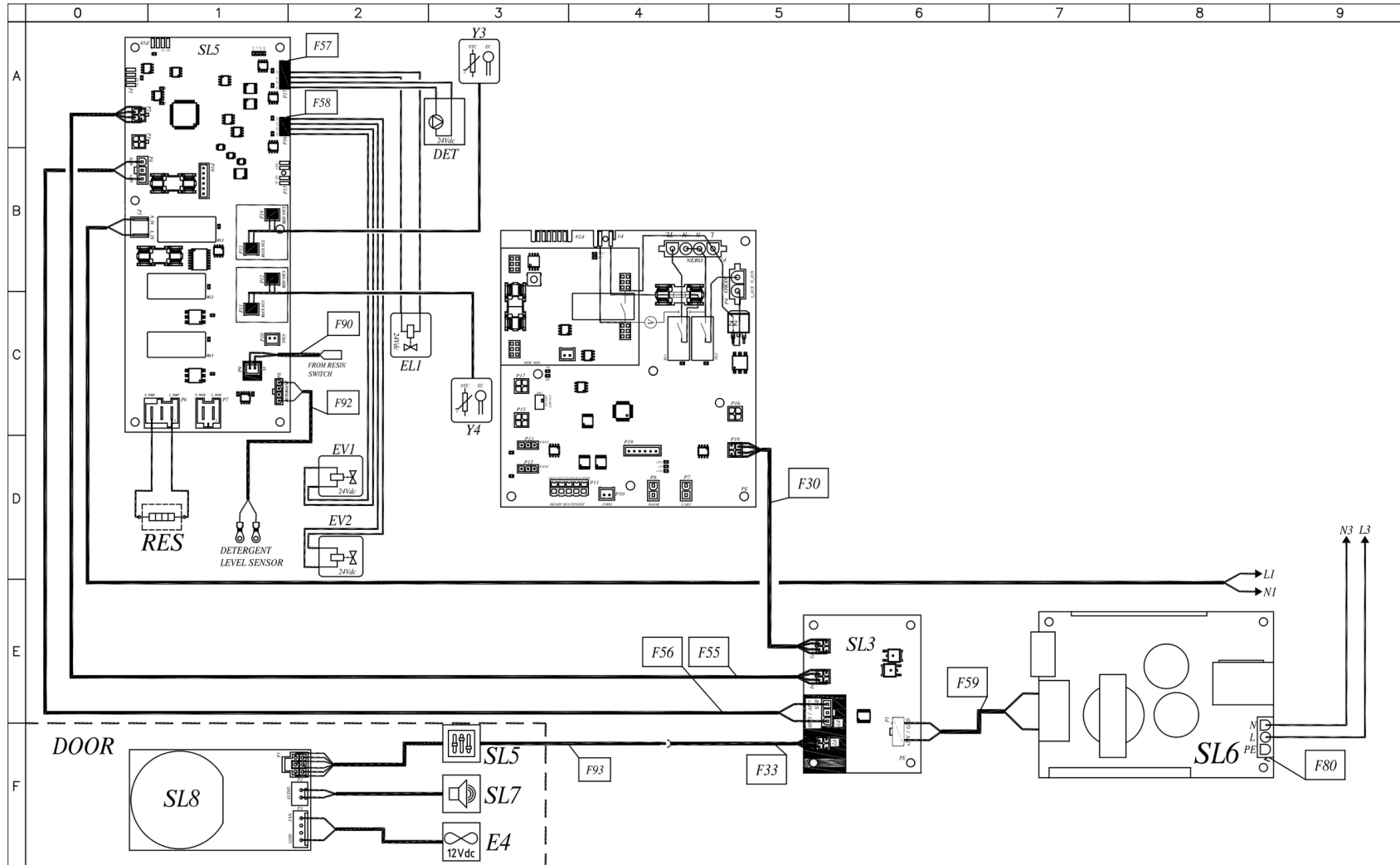
MOD:XEPA-0523-EXRN



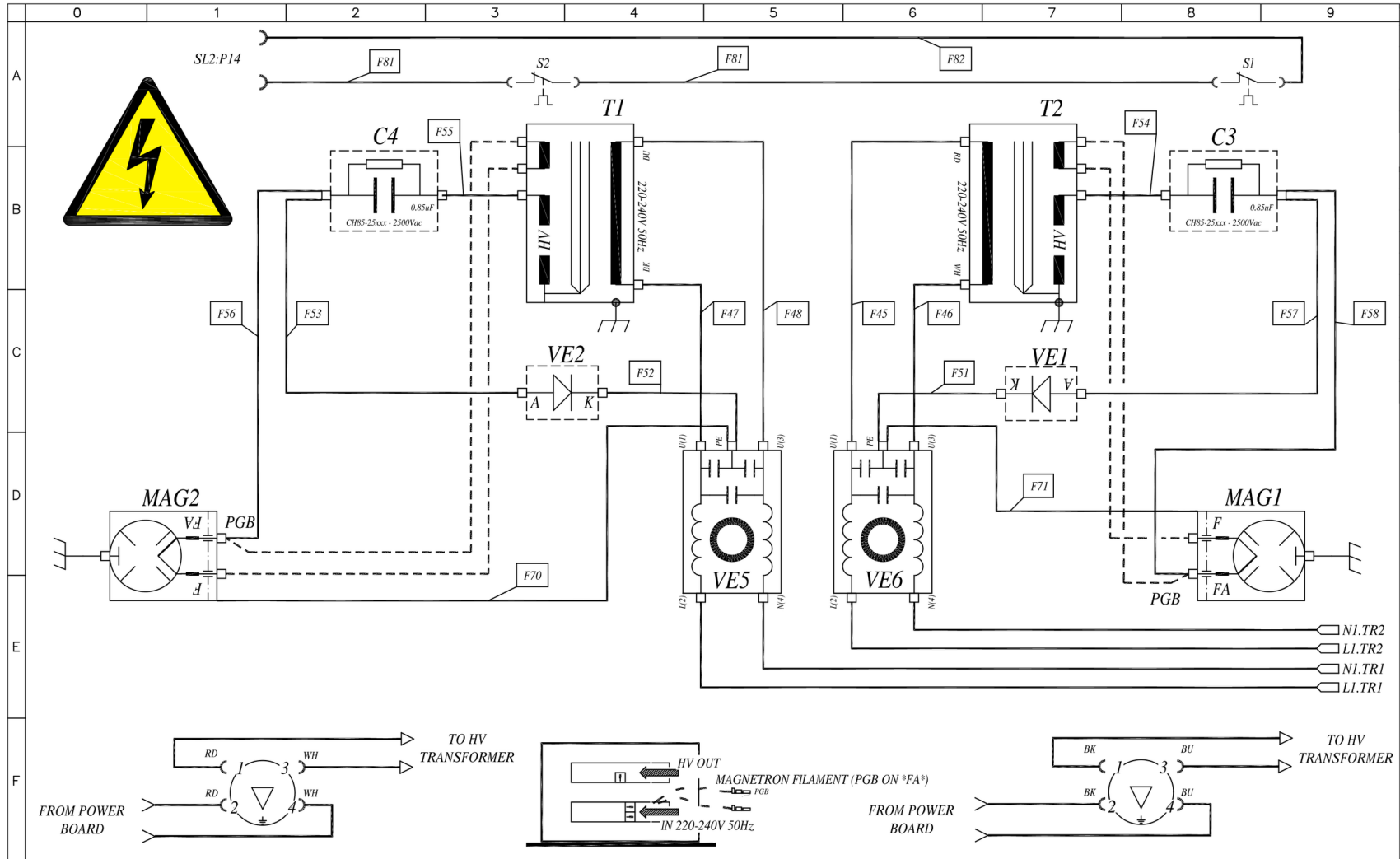
MOD:XEPA-0523-EXRN



MOD:XEPA-0523-EXRN



MOD:XEPA-0523-EXRN



MOD:XEPA-0523-EXRN



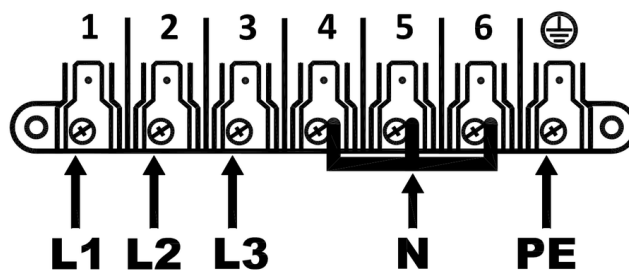
	0	1	2	3	4	5	6	7	8	9
A	<i>Sigle</i>	ITALIANO	ENGLISH	FRANCAIS	ESPAÑOL	DEUTSCH				
	C2	CONDENSATORE	MOTOR CAPACITOR	CONDENSATEUR	CONDENSADOR	KONDENSATOR				
	FU1,FU2	PORTAFUSIBILE CH10	FUSE HOLDER CH10	PORTE-FUSIBILE CH10	PORTAFUSIBILES CH10	SICHERUNGSHALTER CH10				
	K1,K2,K3	TELERUTTORE	CONTACTOR	TELERUPTEUR	TELERUPTOR	RELAIS				
	SL1	SCHEDA POTENZA	POWER CARD	CARTE DE PUISSANCE	TARJETA POTENCIA	POWERPLATINE				
	SL2	SCHEDA POTENZA MW	POWER BOARD FOR MW	POWER CARD MW	TARJETA DE POTENCIA MW	POWER CARD MW				
B	SL6	SCHEDA POTENZA	POWER CARD	CARTE DE PUISSANCE	TARJETA POTENCIA	POWERPLATINE				
	X1	MORSETTIERA 6P+PE	TERMINAL BLOCK 6P+PE	BORNIER 6P+PE	CONECTOR 6P+PE	KLEMMLEISTE 6P+PE				
	DET	POMPA 24Vdc	PUMP 24Vdc	POMPE 24Vdc	BOMBA 24Vdc	PUMPE 24Vdc				
	DRY	DRY MAXY 24Vdc	DRY MAXY 24Vdc	DRY MAXY 24Vdc	DRY MAXY 24Vdc	DRY MAXY 24Vdc				
	EL1,EV1,EV2	ELETTROVALVOLA ACQUA 24Vdc	WATER SOLENOID VALVE 24Vdc	ELECTROVANNE EAU 24Vdc	ELECTROVALVULA 24Vdc	ELEKTROVENTIL 24Vdc				
	SL5	SCHEDA POTENZA	POWER CARD	CARTE DE PUISSANCE	TARJETA POTENCIA	POWERPLATINE				
C	Y3,Y4	SONDA CONDUCIMETRO	CONDUCTIVITY PROBE	SONDE DE CONDUCTIVITÉ	SONDA DE CONDUCTIVIDAD	LEITFÄHIGKEITSSONDE				
	B1,B2	SONDA CAMERA	TEMPERATURE PROBE	SONDE DE CHAMBRE	SONDA CAMARA	GARRAUMTEMPERATURFUHLER				
	E1,E2,E3,E4	VENTOLA RAFFREDDAMENTO 12V	COOLING FAN 12V	TURBINE DE REFROIDISSEMENT 12V	TURBINA DE REFRIGERACION 12V	LÜFTER 12V				
	M1,M2	MOTORE	MOTOR	MOTEUR	MOTOR	MOTOR				
	M3	MOTORE	MOTOR	MOTEUR	MOTOR	MOTOR				
	RES	ELEMENTO RISCALDANTE	HEATING ELEMENT	ELEMENT DE CHAUFFAGE	RESISTENCIA DE CALEFACCIÓN	HEIZUNG				
D	S1	TERMOSTATO SICUREZZA	SAFETY THERMOSTAT	THERMOSTAT DE SECURITE	TERMOSTATO DE SEGURIDAD	SICHERHEITS THERMOSTAT				
	SL3	SCHEDA POTENZA	POWER CARD	CARTE DE PUISSANCE	TARJETA POTENCIA	POWERPLATINE				
	SL4	SCHEDA POTENZA	POWER CARD	CARTE DE PUISSANCE	TARJETA POTENCIA	POWERPLATINE				
	SL5	SCHEDA CONTROLLO	CONTROL BOARD	CARTE DE CONTROLE	TARJETA DE CONTROL	KONTROLL PLATINE				
	SL7	ALTOPARLANTE	SPEAKER	CONFÉRENCIER	ALTAVOZ	LAUTSPRECHER				
	SL8	SCHEDA POTENZA	POWER CARD	CARTE DE PUISSANCE	TARJETA POTENCIA	POWERPLATINE				
E	SL10,SL11	SENSORE VELOCITA MOTORE	MOTOR SPEED SENSOR	CAPTEUR DE VITESSE MOTEUR	SENSOR DE VELOCIDAD MOTOR	GESCHWINDIGKEITSSENSOR				
	C3,C4	CONDENSATORE HV	HV CAPACITOR	CONDENSATEUR HV	CONDENSADOR HV	KONDENSATOR HV				
	MAG1,MAG2	MAGNETRON	MAGNETRON	MAGNETRON	MAGNETRON	MAGNETRON				
	T1,T2	TRASFORMATORE HV	HV TRANSFORMER	TRANSFORMATEUR HV	TRANSFORMADOR DE HV	HV-TRANSFORMATOR				
	VE1,VE2	DIODO HV	HV DIODE	DIODE HV	DIODO HV	HV DIODE				
	VE5,VE6	FILTRO EMI	EMI FILTER	FILTRE EMI	FILTRO EMI	EMI-FILTER				
F										

MOD:XEPA-0523-EXRN



ED1506A POWER SUPPLY - CONNECTION DIAGRAM

380-415V ~ 3PH + N + PE 50Hz



220-240V ~ 3PH + PE 50Hz

