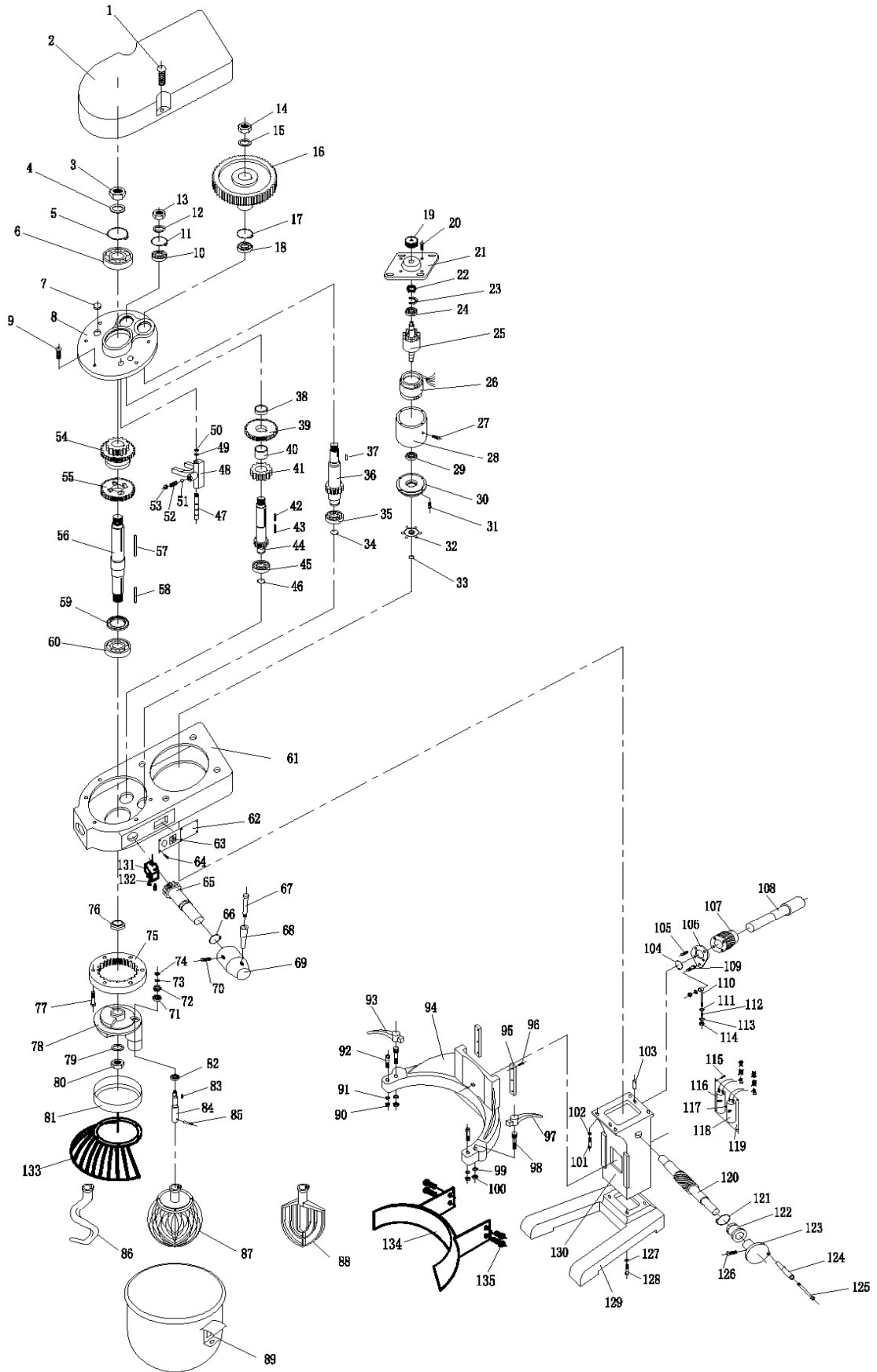


МИКСЕР ПЛАНЕТАРНЫЙ HURAKAN HKN-IP40FZ




МИКСЕР ПЛАНЕТАРНЫЙ HURAKAN HKN-IP40FZ

| Поз | Наименование детали | Кол | | | | | | |
|-----|--------------------------|-----|-----|-------------------------|---|-----|---------------------|---|
| 1 | Screw M6X110 | 2 | 59 | Oil Seal 38X58X12 | 1 | 117 | Screw M6X15 | 1 |
| 2 | Cover | 1 | 60 | Bearing 6207 | 1 | 118 | Capacitor 35UF | 1 |
| 3 | Nut M22X1.5 | 1 | 61 | Case | 1 | 119 | Plate | 1 |
| 4 | Washer 22 | 1 | 62 | Label | 1 | 120 | Worm shaft | 1 |
| 5 | Circlip for hole D62 | 1 | 63 | Swith | 1 | 121 | Snap Spring D30 | 1 |
| 6 | Bearing 6206 | 1 | 64 | Screw M5X8 | 5 | 122 | Locating Sleeve | 1 |
| 7 | Oil-Hde Cover | 1 | 65 | Shift Gear | 1 | 123 | Hand wheel | 1 |
| 8 | Box cover | 1 | 66 | Snap Spring D20 | 1 | 124 | Hand wheel handle | 1 |
| 9 | Screw M6X25 | 4 | 67 | Shift lever handle core | 1 | 125 | Core Shaft | 1 |
| 10 | Bearing 6204 | 1 | 68 | Shift lever handle | 1 | 126 | Screw M8X16 | 1 |
| 11 | Circlip forhole D47 | 1 | 69 | Shift lever seat | 1 | 127 | Spring Washer 12 | 4 |
| 12 | Washer 16 | 1 | 70 | Screw M8X16 | 1 | 128 | ScrewM12X45 | 4 |
| 13 | Nut M16X1.5 | 1 | 71 | Bearing 6205 | 1 | 129 | Footing | 1 |
| 14 | Nut M16x1.5 | 1 | 72 | Planetary Gear Z=22 | 1 | 130 | Guide pillar | 1 |
| 15 | Washer 16 | 1 | 73 | Washer 16 | 1 | 131 | Micro switch | 1 |
| 16 | Synchronows belt weel | 1 | 74 | Nut M16X1.5 | 1 | 132 | Screw M4X25 | 2 |
| 17 | Circlip for hole D47 | 1 | 75 | Ring Gear Z=70 | 1 | 133 | Protective guard | 1 |
| 18 | Bearing 6204 | 1 | 76 | Spacer Sleeve | 1 | 134 | Fixed crash barrier | 1 |
| 19 | Synchronows belt weel | 1 | 77 | Screw M6X25 | 6 | 135 | Screw M4X25 | 4 |
| 20 | Screw M5X20 | 4 | 78 | Planetary Gear holder | 1 | | | |
| 21 | Front cover | 1 | 79 | Washer 22 | 1 | | | |
| 22 | Centrifugal Switch | 1 | 80 | Nut M22X1.5 | 1 | | | |
| 23 | Bottom Plate | 1 | 81 | Ring | 1 | | | |
| 24 | Bearing 6205 | 1 | 82 | Bearing 6006 | 1 | | | |
| 25 | Rotor | 1 | 83 | Dowel 8X18 | 1 | | | |
| 26 | Stator | 1 | 84 | Stir Shaft | 1 | | | |
| 27 | Fastening screw M6X15 | 1 | 85 | Straight Pin 10X30 | 1 | | | |
| 28 | Motor shell | 1 | 86 | Dough mixer | 1 | | | |
| 29 | Bearing 6205 | 1 | 87 | Stirred ball | 1 | | | |
| 30 | Bake Cover | 1 | 88 | Agitator | 1 | | | |
| 31 | Screw M5X20 | 4 | 89 | Charging barrel | 1 | | | |
| 32 | Motor Fan | 1 | 90 | Nut M8 | 2 | | | |
| 33 | Snap Spring D15 | 1 | 91 | Ring Washer 11 | 2 | | | |
| 34 | Snap Spring D20 | 1 | 92 | Anchlr Pin | 2 | | | |
| 35 | Bearing 6204 | 1 | 93 | Lock Handle | 1 | | | |
| 36 | Inputshaft Z=13 | 1 | 94 | Barrel Holder | 1 | | | |
| 37 | Dowel 6X30 | 1 | 95 | Flat Clamp | 2 | | | |
| 38 | Spacer Sleeve | 1 | 96 | Screw M8X16 | 6 | | | |
| 39 | Gear Z=34 | 1 | 97 | Lock Handle | 1 | | | |
| 40 | Spacer Sleeve | 1 | 98 | Locking Pin | 2 | | | |
| 41 | Gear Z=24 | 1 | 99 | Washer 12 | 2 | | | |
| 42 | Dowel 6X20 | 1 | 100 | Nut M12 | 2 | | | |
| 43 | Dowel 6X20 | 1 | 101 | Screw M12X35 | 4 | | | |
| 44 | Second Motion shaft Z=15 | 1 | 102 | Ring Washer 12 | 4 | | | |
| 45 | Bearing 6204 | 1 | 103 | Straight Pin 8X16 | 2 | | | |
| 46 | Snap Spring D20 | 1 | 104 | Snap Spring D4 | 1 | | | |
| 47 | Fork Shaft | 1 | 105 | Screw M8X20 | 4 | | | |
| 48 | Shift Fork | 1 | 106 | Worm wheel splint | 1 | | | |
| 49 | Ring Washer 10 | 1 | 107 | Lifting Gear | 1 | | | |
| 50 | Nut M10 | 1 | 108 | Lifting worm shaft | 1 | | | |
| 51 | Steel ball D8 | 1 | 109 | Screw hook | 1 | | | |
| 52 | Positioning Spring | 1 | 110 | Lifeing hook | 1 | | | |
| 53 | Screw M10X20 | 1 | 111 | Washer 12 | 1 | | | |
| 54 | Double Gear Z=27, 37 | 1 | 112 | Spring | 1 | | | |
| 55 | Gear Z=46 | 1 | 113 | Washer 12 | 1 | | | |
| 56 | Output shaft | 1 | 114 | Nut M12 | 3 | | | |
| 57 | Dowel 10X115 | 1 | 115 | Screw M4X8 | 4 | | | |
| 58 | Dowel 8X55 | 1 | 116 | Capacitor 200UF | 1 | | | |