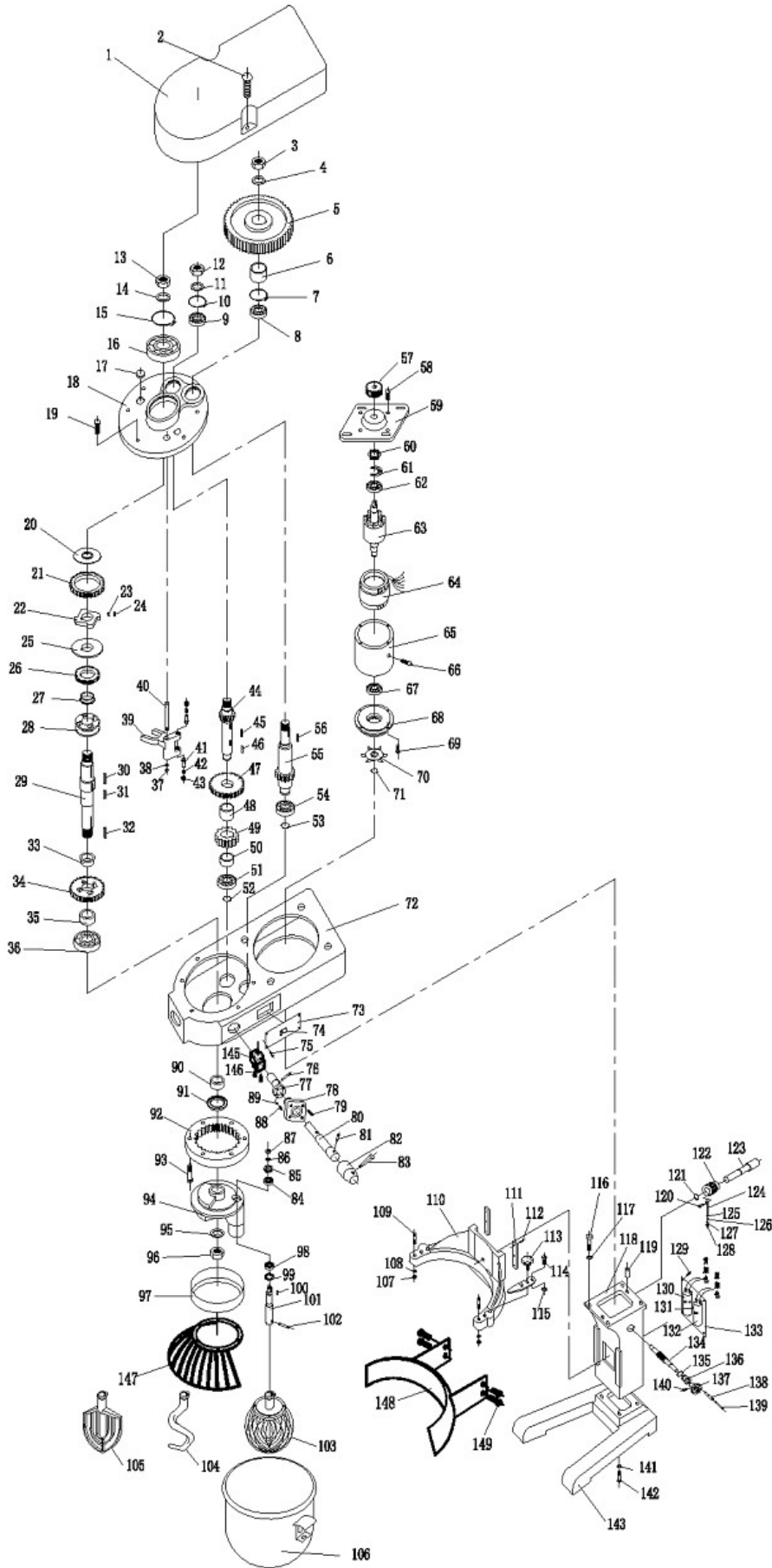


**МИКСЕР ПЛАНЕТАРНЫЙ HURAKAN HKN-IP30FZ**




## МИКСЕР ПЛАНЕТАРНЫЙ HURAKAN HKN-IP30FZ

Поз	Наименование детали	Кол						
1	Box cover	1	59	Motor flange	1	117	Ring Washer 10	4
2	Screw M6X90	2	60	Centrifugal Switch	1	118	Guide pillar	1
3	Nut M12	1	61	Bottom Plate	1	119	Straight Pin 8X16	2
4	Washer 12	1	62	Bearing 6203	1	120	Screw hook	1
5	Synchronows belt weel	1	63	Rotor	1	121	Snap Spring D17	1
6	Spacer Sleeve	1	64	Stator	1	122	Lifting gear Z=40	1
7	Circlip for hole D35	1	65	Motor shell	1	123	Lifting worm shaft	1
8	Bearing 6003	1	66	Fastening screw M6X15	1	124	Lifeing hook	1
9	Bearing 6005	1	67	Bearing 6203	1	125	Washer 10	1
10	Circlip for hole D35	1	68	Bake Cover	1	126	Spring	1
11	Washer 12	1	69	Screw M6X30	4	127	Washer 10	1
12	Nut M12	1	70	Motor Fan	1	128	Nut M10	2
13	Nut M16X1.5	1	71	Snap Spring D15	1	129	Screw M4X8	4
14	Washer 16	1	72	Case	1	130	Capacitor 150UF	1
15	Circlip for hole D47	1	73	Label	1	131	Screw m16X15	1
16	Bearing 6204	1	74	Switch	1	132	Capacitor 20UF	1
17	Oil-Hde Cover	1	75	Screw M4216	6	133	Plate	1
18	Box cover	1	76	Conical Pin 4X20	1	134	Worm Shaft	1
19	Screw M5X25	3	77	Knee-Piece	1	135	Snap spring D30	1
20	Cam Splint	1	78	Locating Cover Plate	1	136	Sleeve	1
21	Gear Rim Z=52	1	79	Screw M6X14	4	137	Hand wheel	1
22	Cam	1	80	Hinge Pin	1	138	Hand wheel handle	1
23	Leaf spring	4	81	Conical Pin 4X25	1	139	Core shaft	1
24	Cylindrical roller 8X16	4	82	Locating Sleeve	1	140	Screw M16X16	1
25	Cam Splint	1	83	Shift lever Handle	1	141	Spring Washer 10	4
26	Gear Z=31	1	84	Bearing 6204	1	142	Screw M10X15	4
27	Sliding Collar	1	85	Planetary Gear Z=18	1	143	Base Foot	1
28	Conjugant	1	86	Washer 10	1	145	Micro switch	1
29	Output shaft	1	87	Nut M10	1	146	Screw M4X25	2
30	Dowel 6X16	1	88	Positioning Spins	2	147	Protective guard	1
31	Dowel 6X35	2	89	Steel ball D6	2	148	Fixed crash barrier	1
32	Dowel 6X50	1	90	Sleeve	1	149	Screw M4X25	4
33	Sliding collar	1	91	Oil seal 30X52X10	1			
34	Gear Z=45	1	92	Ring gear Z=60	1			
35	Spacer Sleeve	1	93	Screw M6X25	5			
36	Bearing 6205	1	94	Planetary Gear Holder	1			
37	Nut M10	1	95	Wacher 16	1			
38	Ring washer 10	1	96	Nut M16	1			
39	Shift Fork	1	97	Ring	1			
40	Fork Shaft	1	98	Bearing 6005	1			
41	Fork contact	2	99	Oil Seal 225X50X10	1			
42	Spring	2	100	Dowel 5X15	1			
43	Regulating Nut	2	101	Planetary Gentsluft	1			
44	Second Motion shaft Z=14	1	102	Straight Pin 10X30	1			
45	Dowel 6X15	1	103	Stirred ball	1			
46	Dowel 6X20	1	104	Dough mixer	1			
47	Gear Z=35	1	105	Agitator	1			
48	Spacer Sleeve	1	106	Charging barrel	1			
49	Gear Z=21	1	107	Nut M8	2			
50	Spacer Sleeve	1	108	Ring washer 8	2			
51	Bearing 6003	1	109	Anchor pin	2			
52	Snap Spring D17	1	110	Barrel holder	1			
53	Snap Spring D17	1	111	Flat Clamp	2			
54	Bearing 6003	1	112	Screw M6X16	6			
55	Inputshaft Z=14	1	113	Locking pin	2			
56	Dowel 5X25	1	114	Screw M6x20	2			
57	Synchronous belt wheel	1	115	Washer 6	2			
58	Screw M6X30	4	116	Screw Hook	4			